

Supplementary Guide – WWVDS Highlighted Sign LED Replacement

How to Replace the WWVDS Highlighted Sign LEDs

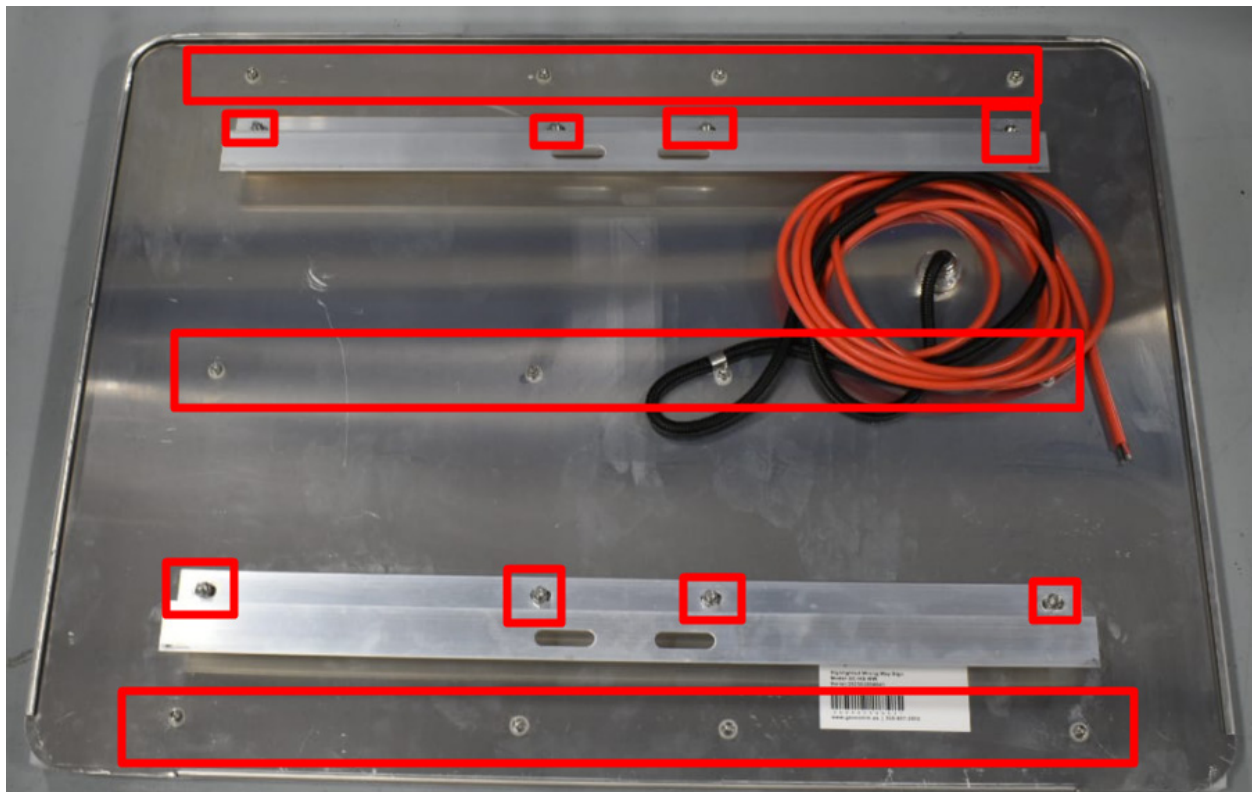
This is a step-by-step guide on how to replace LEDs for the GovComm Wrong Way Vehicle Detection System (WWVDS) highlighted signs.

Step 1 – Remove the Sign from the Pole

- Carefully remove the sign from the pole.

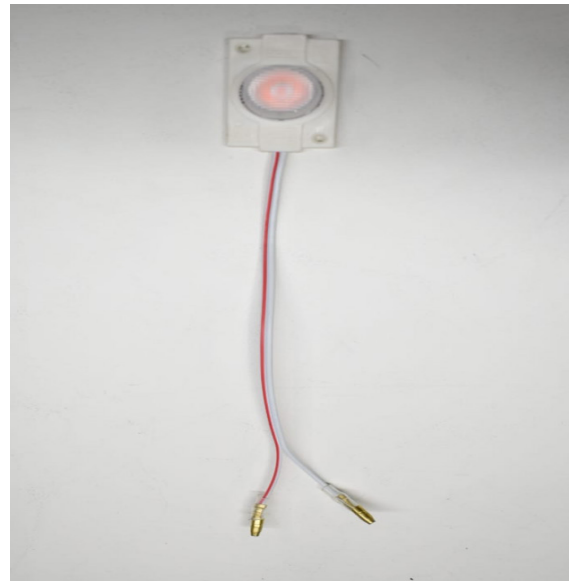
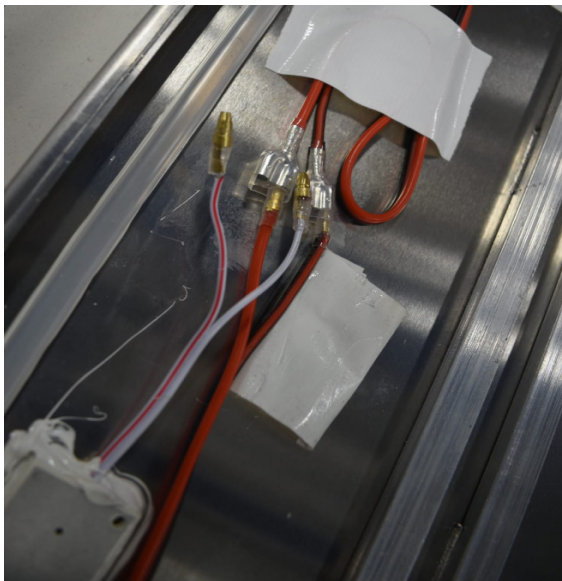
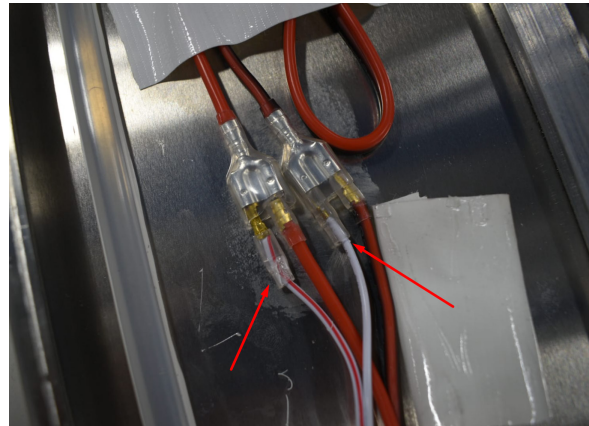
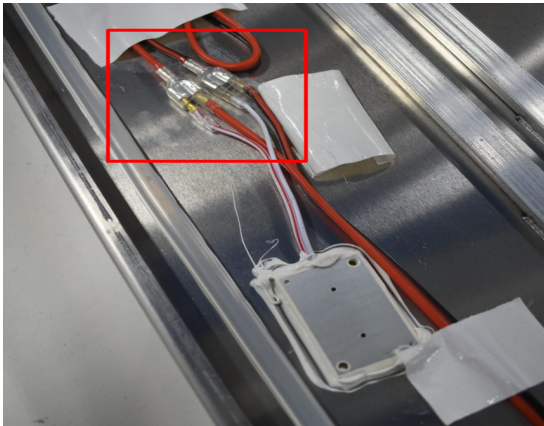
Step 2 – Install the Camera on the Junction Box Lid

- Loosen the nuts holding the Z-brackets of the sign.
- Fully unscrew the screws holding the back panel of the sign.
- Carefully slide down the back panel to access the internal wiring.



Step 3 – Replace the LED

- Unplug and remove the damaged LED.
- Install the new LED in its place.
- Ensure the wiring polarity is correct:
 - Positive to positive
 - Negative to negative
- Repeat step three for each additional LED needing replacement.

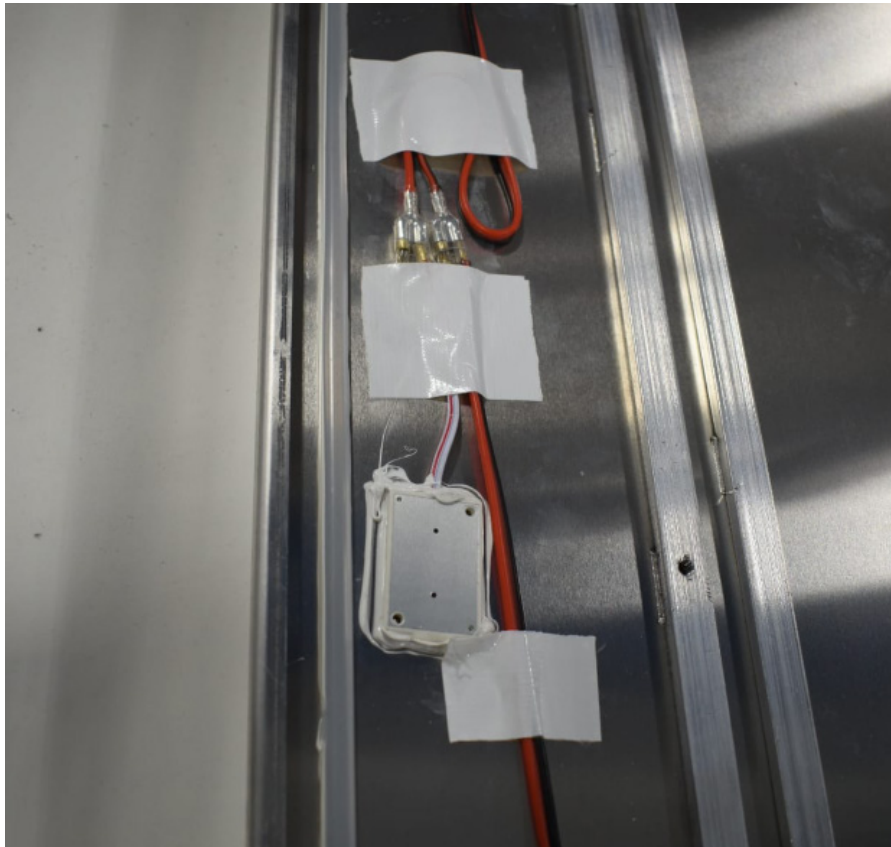


Step 4 – Test the Sign

- Using a 12V battery, test the entire sign before permanently securing the new LED. Verify that all LEDs are operating properly

Step 5 – Secure the New LED(s) and Close the Sign

- Apply silicone (exp. DOW 3145) to secure the new LED.
- Use tape to keep the LED in position while the adhesive cures.
- Slide the back panel into place.
- Reinstall all screws securely.
- Make sure there are no gaps in the panel to prevent water intrusion.



Step 6 – Reinstall the Sign

- Reattach the sign to the pole.
- Connect the sign wiring to the system or enclosure sign terminals.
- Verify proper operation after installation.