

Supplementary Guide – WWVDS Bi-Spectrum Cameras Installation

How to Install the WWVDS Cameras

This is a step-by-step guide on how to install the bi-spectrum cameras for the GovComm Wrong Way Vehicle Detection System (WWVDS).

Applicable Camera Models

This manual applies to the following camera model numbers:

- GC-THO-156
- GC-THO-D2530

Each camera is shipped with the following accessories:

- Junction Box — GC-JB-S
- Pole Mount Adapter — GC-PM-S

What Is Included in the GC-JB-S kit



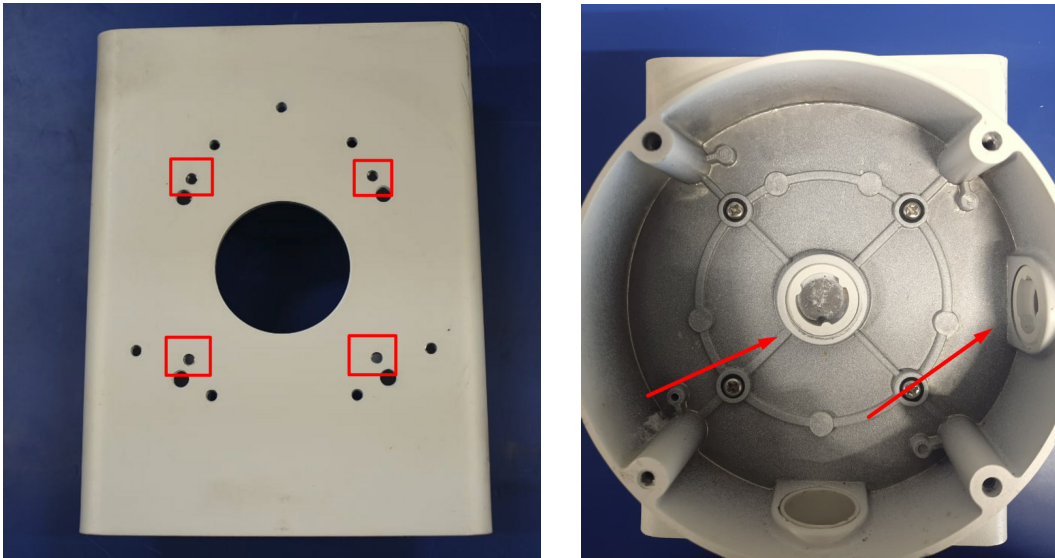
- Junction Box
- Cable Gland
- Screws
- Two (2) Caps
- Screw Tool

What Is Included in the GC-PM-S Package



- Pole Mount Adapter
- Screws
- Screw Tool
- Stainless Steel Mounting Straps

Step 1 – Attach the Junction Box to the Pole Mount

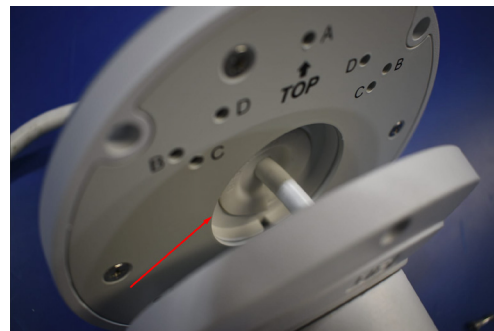
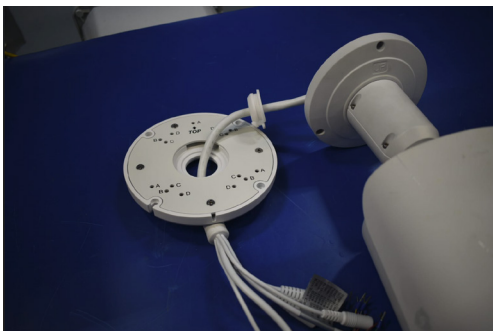


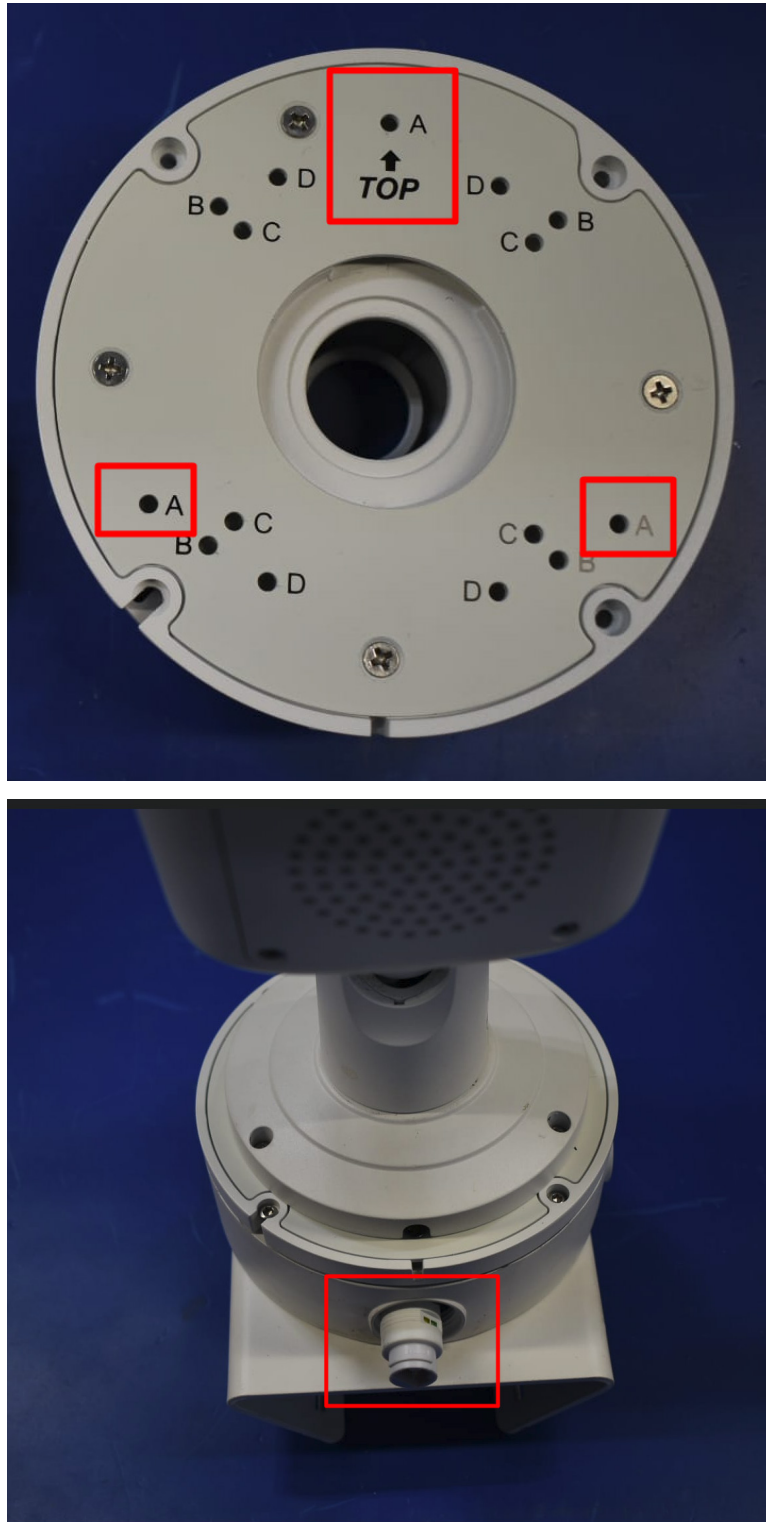
Use the designated holes on the bottom of the junction box to attach it to the pole mount adapter.

- Use the provided screws to secure the junction box to the pole mount.
- Install the two provided caps to close the unused holes located in the middle and on the right side.

Step 2 – Install the Camera on the Junction Box Lid

1. Insert the camera wires through the lid of the junction box.
2. Ensure the opening is properly sealed using the rubber protection.
3. Use the provided screws for the holes labeled “A” to attach the camera to the junction box lid.
4. Carefully place the wires inside the junction box.
5. Use the provided screws to close and secure the junction box.





Step 3 – Mount the Camera Assembly on the Pole

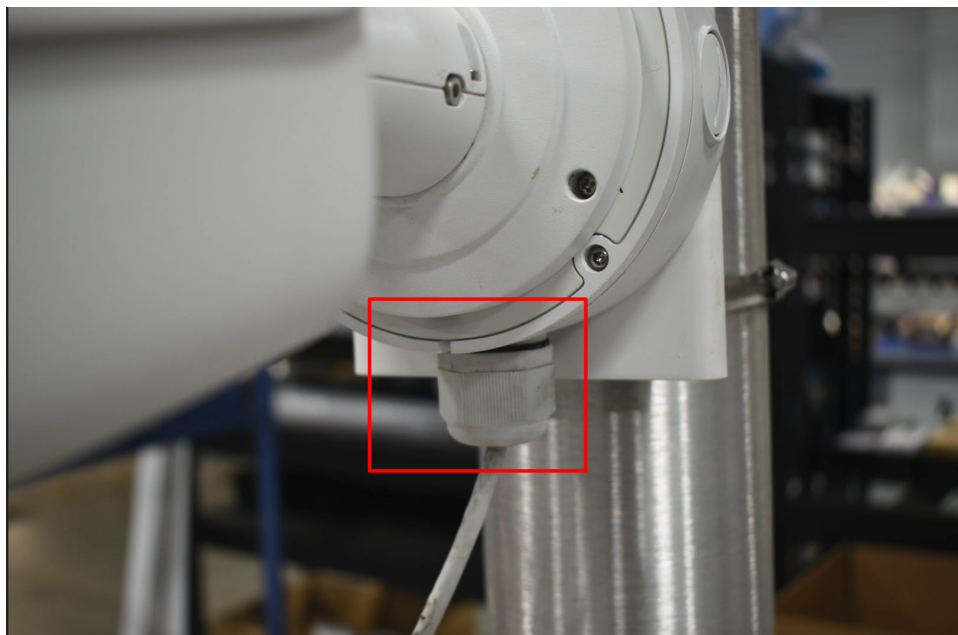
Using the stainless-steel mounting straps, attach the complete camera assembly to the pole.

Important Installation Notes

- The **Detection Camera** should be installed as high as possible on the pole.
- The **Confirmation Camera** can be installed directly below the detection camera.



1. Connect the Ethernet cable to the RJ45 connector on the camera.
2. Install and tighten the cable gland to ensure a weatherproof seal.



Pointing and Aligning the Camera – Pan

Use the adjustment screw located on the side of the camera to:

- Point the camera up or down.
- Align the viewing angle.



Pointing and Aligning the Camera – Tilt

To move the camera left or right:

1. Loosen just a little the stainless-steel mounting straps.
2. Point left or right the camera together with the entire pole mount adapter.
3. Re-tighten the mounting straps securely after alignment.



Final Installation Check

Before completing the installation, verify the following:

- Junction box is fully sealed.
- Cable gland is tightened properly.
- Ethernet connection is secure.
- Camera image is aligned correctly.
- Mounting straps are tightened securely.
- Detection camera is installed at the highest possible point on the pole.