

READ BEFORE COMMISSIONING SYSTEM

Read this document prior to installation and commissioning of your GovComm Wrong Way Vehicle Detection System (WWVDS).

Before Installation

Before starting the installation, make sure you have all the appropriate equipment required for the specific location being installed.

Carefully inspect the received shipment and locate the labels on each box.



Figure 1 - Small Nema Enclosure Label



Figure 2 - WWVDS Label

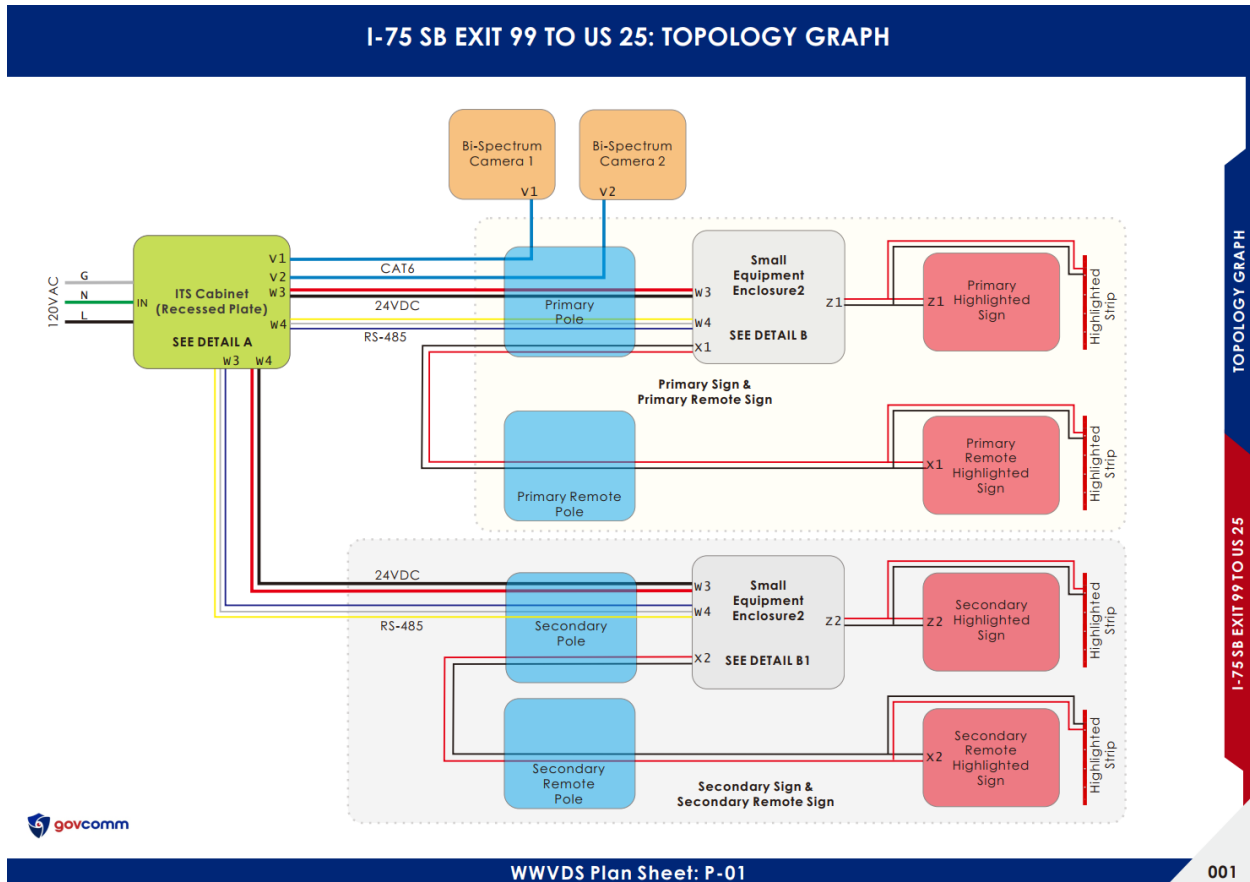
On each label, you will find the location name where the equipment is intended to be installed. The WWVDS equipment is typically packaged separately from additional equipment such as:

- Cameras
- NEMA Enclosures
- Solar Enclosures
- Other accessories

It is important to verify that all equipment matches the installation location before proceeding.

Installation Drawings

Once you arrive at the installation location with the correct equipment, open the WWVDS box. Inside the box, you will find installation drawings specific to that location.

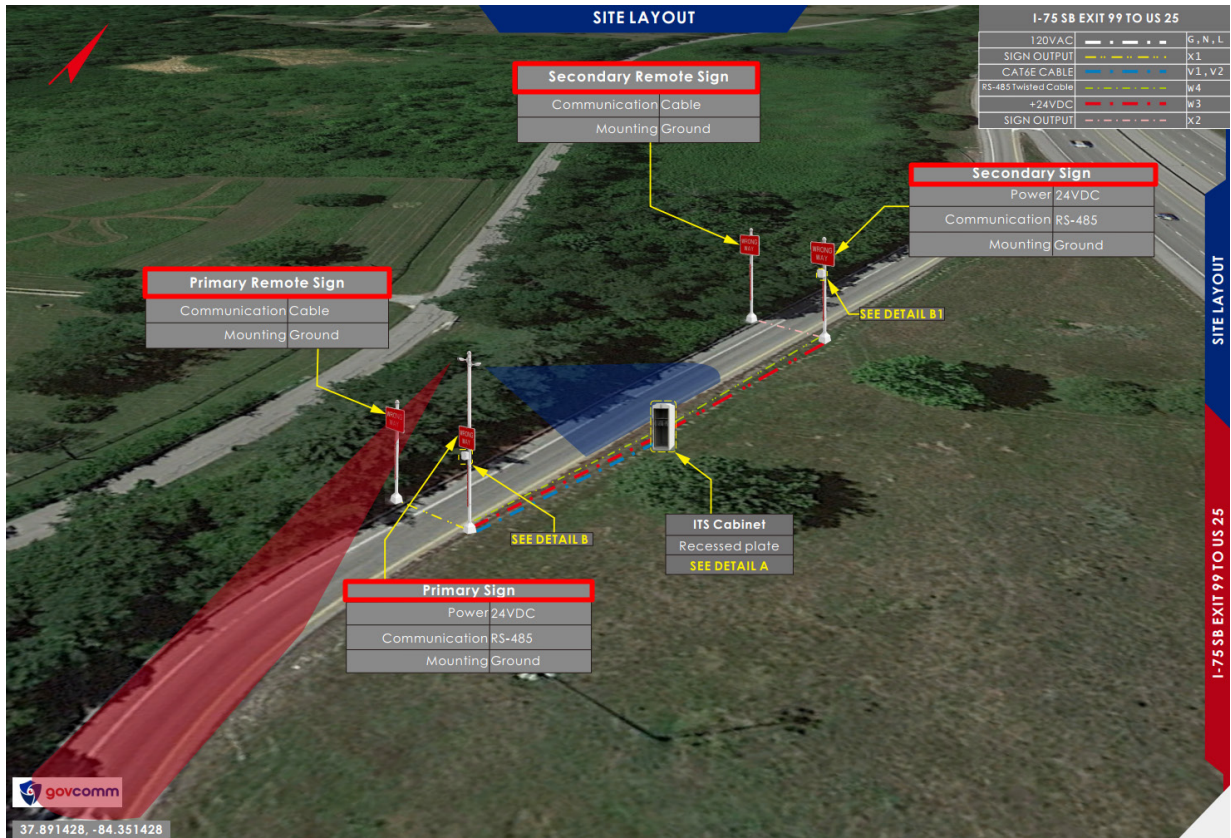


These drawings provide important information, including:

- Wiring installation details
- Equipment placement
- Sign naming conventions
- System connections

Wrong Way Signs and Small NEMA Enclosures

Pay close attention to the naming of the Wrong Way signs shown on the drawings.

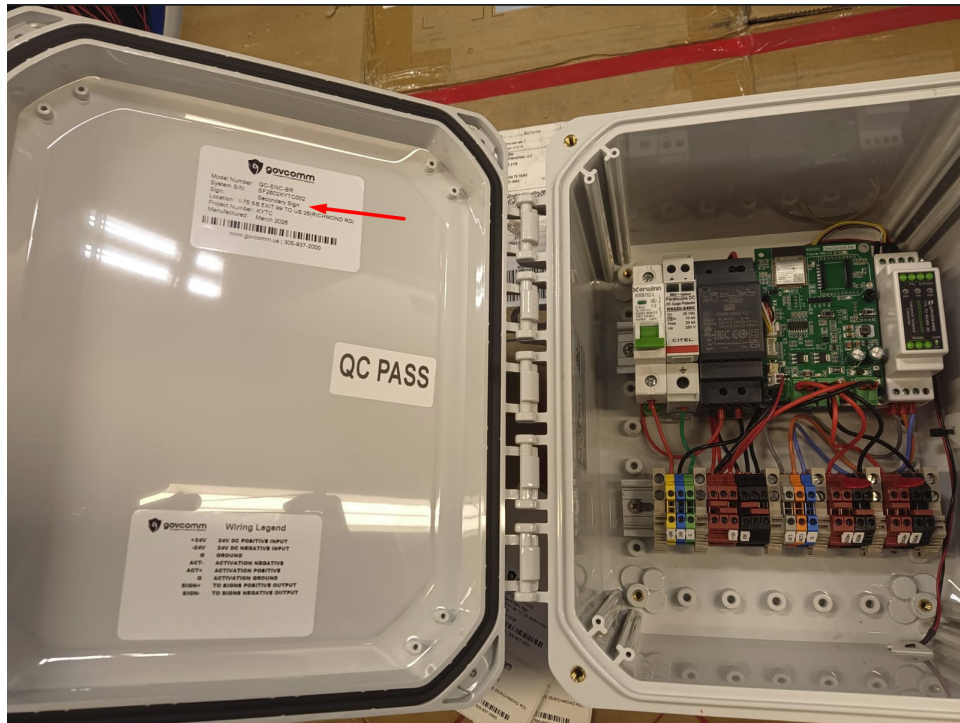
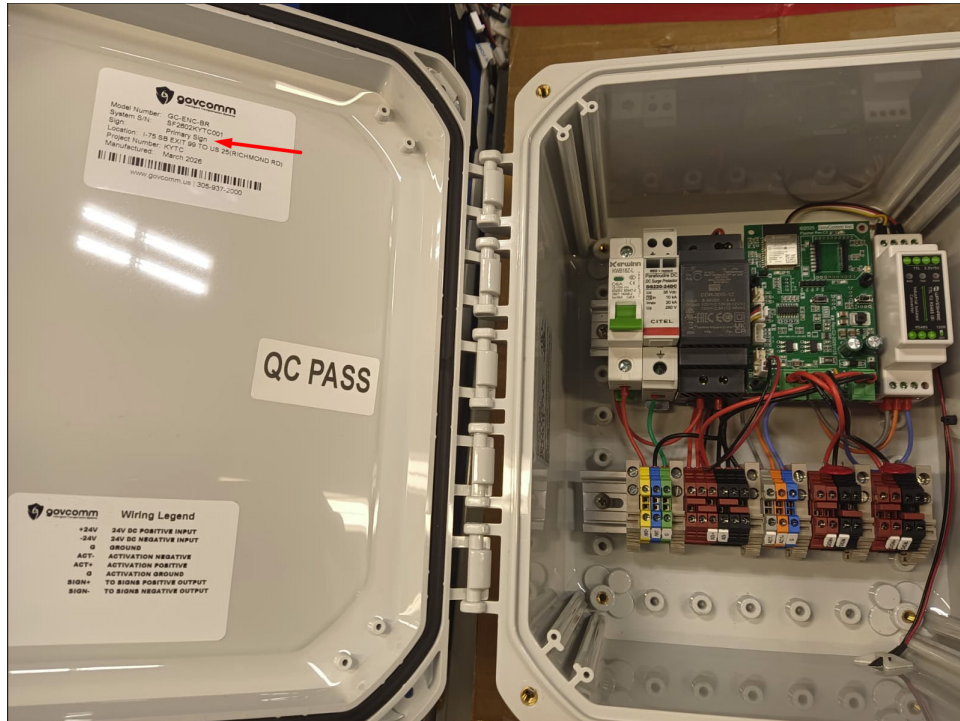


Each small NEMA enclosure for the signs has a specific label that corresponds directly to the installation drawings.

It is very important to install each enclosure in the correct location according to the drawings and labels provided.

Both the WWVDS enclosure and the small NEMA enclosures include additional labels with a **wiring legend** to assist during wiring and installation.

The terminal blocks inside the enclosures are also labeled to help simplify the wiring process.

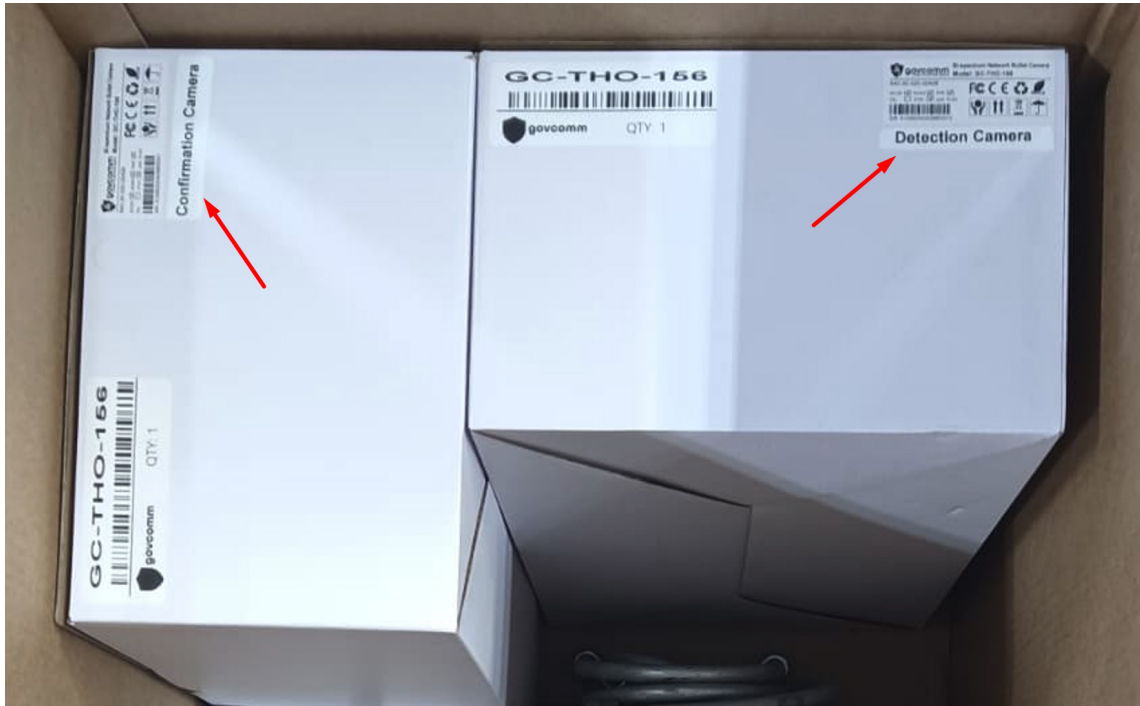


Camera Identification

The cameras are labeled as:

- **Detection Camera** –Front view camera
- **Confirmation Camera** – Rear view camera

Please ensure the cameras are installed in their designated locations according to the installation drawings.



Installation Notes

By following the installation drawings and equipment labeling instructions, the installation process should be easier and more efficient.

Always verify before completing the installation.:

- Equipment labels
- Enclosure names
- Wiring legends
- Terminal labels
- Camera positions

Technical Support

If you have any questions or concerns during the installation process, please contact GovComm below:

- Email – support@govcomm.us
- Phone – 305-937-2000