



govcomm
Intelligent Transportation Systems



• KEY ATTRIBUTES

- Hardened for Environmental Elements
- 3M™ Diamond Grade Prismatic Reflective Sheeting
Detection Zone(s) Editable & Configurable
- Embedded Bright LEDs
- Day/Night LED Dimmer
- Programmable Controller
- AC and Solar Power Options
- Wired and Wireless Communication Options
- Alerts Drivers in Real-Time for Countermeasure
- Concealed Controls

Highlighted Signs

- Model - GC-HS-WW

Technical Specifications

ATTRIBUTES

Sign Type: Highlighted High Intensity Wrong Way Sign w/ 8 Red Embedded LEDs

Size & Weight: 42" X 30" | 38.4 lbs.

Mounting: Aluminum Z-Bar Brackets (set of 2)

Sign Material: 5052 Aluminum, Composite & Type XI DG3 3M Sheet w/ Anti- Graffiti Overlay

Fasteners: Corrosion-Resistant Type 304 or 316 Passivated Stainless Steel

Bright LEDs: 12VDC, LED 3 Watts each

Flash Rates: 50 / 60 times per minute or programmable as required.

Communication & Activation: Hard Wired or RF Wireless

Pole: Crash Tested Spun Aluminum Pole w/ Base Cap & 4 Anchor Bolts

ENVIRONMENTAL AND REGULATORY

Laboratory Testing: Independent Laboratory Certified NEMA T4-2016 Section 2 Compliant

Storage Temperature: -40°F to 167°F 95 % Humidity

Operating Temperature: -40°F to 167°F 95% Humidity

Power: 120VAC w/ DC Converter or Solar Option

Solar Power Option: Solar Panel, Battery Cabinet, Battery, Solar Charger / Inverter – 10 Day Survival without Sun

Regulatory: Meets the Design & Functional Requirements of Section 2A of MUTCD

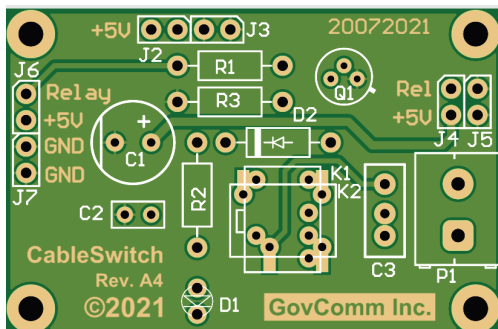
Enclosure Mounted to Back of Sign:

UL Listed to UL508-4x specifications

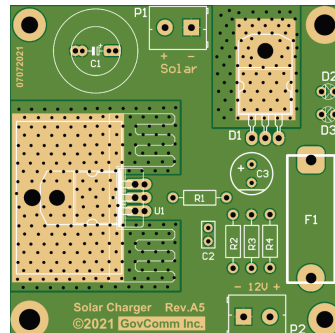
Meets NEMA 1, 2, 4, 4X, 12 & 13 specifications

IP66 ingress rating

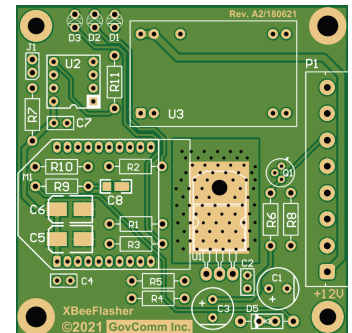
Impact-resistant UV Stabilized Polycarbonate material



Direct Connect
GC - DC1



Solar Charger
GC - SC1



Controller/ Receiver
GC - FD1